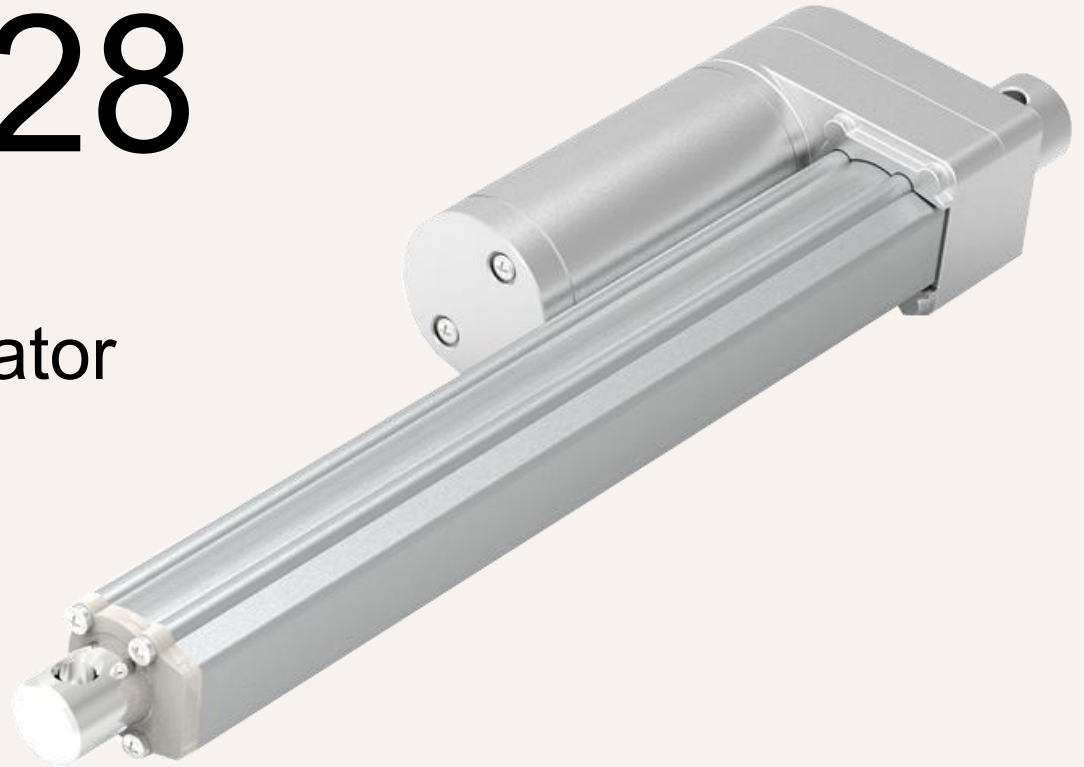


HTA28

Series model

Linear Actuator



Applications

1. Medical
2. Furniture
3. X-ray Machine
4. Light Industry

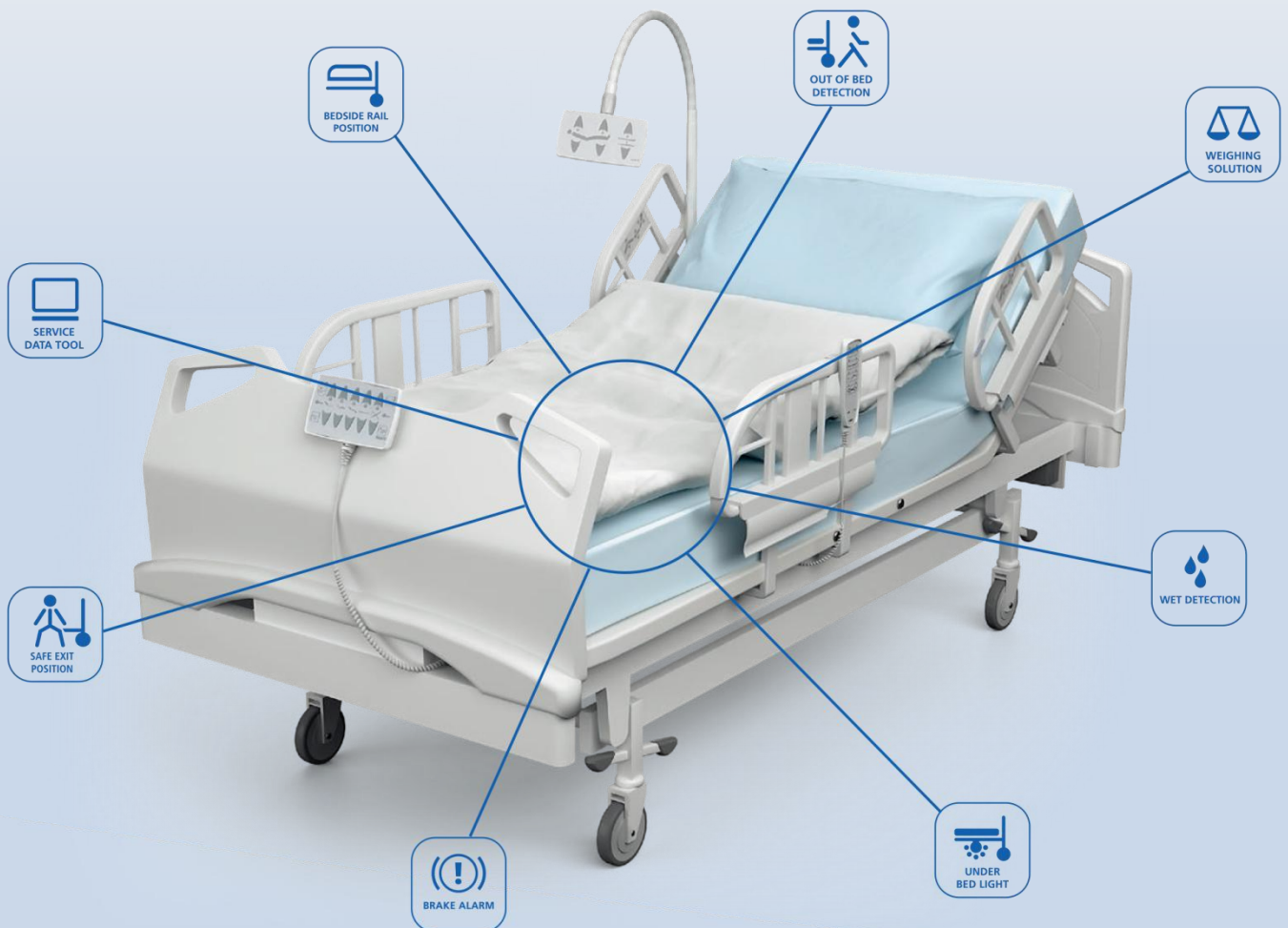
The biggest feature of HTA28 is low noise and compact installation size, especially suitable for X-ray machine or other medical applications. It can also be used in furniture or offices, and it can be controlled by a microcomputer for convenient automation.

Features	
Voltage:	12V, 24V, 36V, and 48V DC
Max Push/Pull Force:	2500N(Push), 2000N(Pull)
Speed @ Full load:	5. mm / s (Load 2500N)
Retracted Length:	Stroke + 125mm Stroke + 145mm(S >=300 MM)
Dynamic Torque:	50Nm
Static Torque:	80Nm
Color:	Silver, Black
Low Noise:	48DB
Quality Management:	ISO9001-2008, certified by CE and ROHS
Ambient temp. Range:	-25 ° C ~ + 70 ° C
Operating Temp. Range:	+5 ° C ~ + 45 ° C
Protection Level:	IP66
Screw Type:	Trapezoidal
Signal Output:	Hall sensor
Option for Control System:	Synchronous Control(100%), Separate Control
Material:	High-strength metal zinc alloy gear box and housing
Limit Switches:	Built-in, but not adjustable



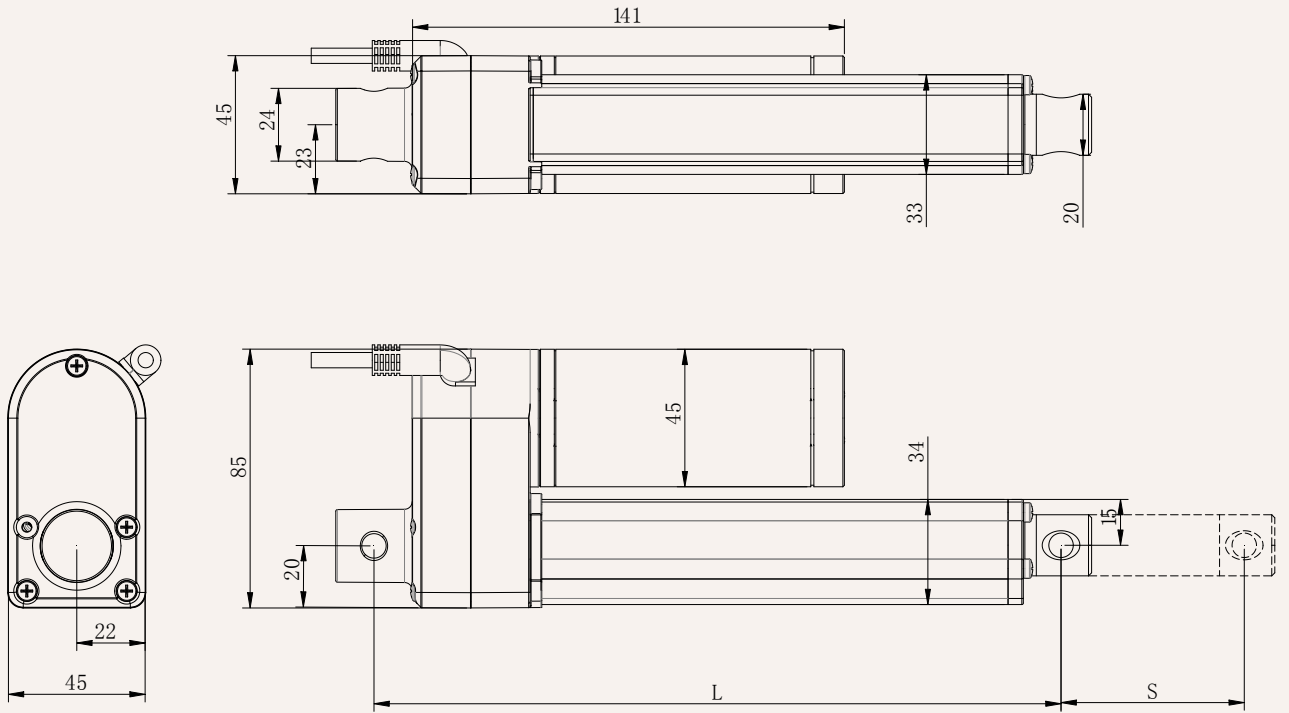
Smart Lifting System for Bed

To make the most of the available space, the motor system is well hidden under the bed. The system is designed to be easy to clean or place and is an innovative solution.



Drawing

Dimensions
(MM)



S: Stroke

L: Retracted length

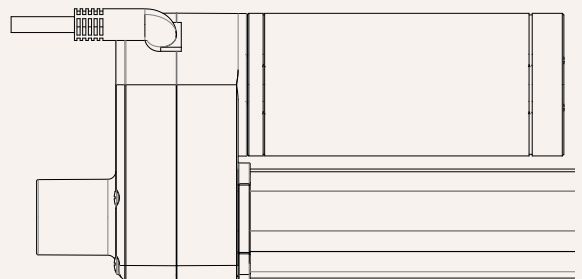
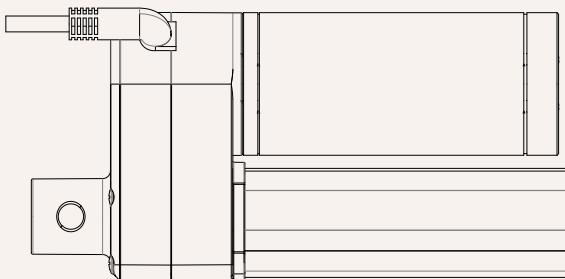
L = Stroke + 125mm

Stroke >= 300MM, L = Stroke + 140MM

Mounting Angle (Counterclockwise):

1 = 0°

2 = 90°



LOAD & SPEED

Code	Rated Load		Self-locking	Rated Current	Rated Speed	Rated Speed
	Push N	Pull N	Static N	Full-load A	No-load mm/s	Full-load mm/s
Motor Speed (3800RPM, duty cycle 10%) 24V DC						
A	2500	2500	3000	6.8	6.0	4.7
B	2000	2000	/	6.3	12.0	9.4
C	1000	1000	/	5.4	18.0	14.3
D	1000	1000	1000	3.6	12.0	9.5
E	600	600	600	3.6	24.0	20.1
F	300	300	/	4.1	36.0	30.0

Remark

1. The current and speed in the table are the averages tested when using push force.
2. The current & speed results in the table are based on the use of a GaMinG brand control box, and there will be an error of about 10% depending on different types of the control box.
3. 29V DC @ no-load, 24V DC @ rated load
4. Stroke & Load:

Load (N)	Stroke Range (mm)
2500	50-400
1500	401-600
<=1000	601-800

Reference Chart

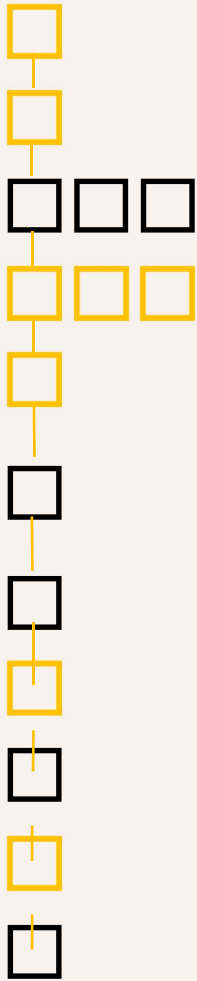
HTA28	Load ± 10% (N)					Speed ± 2 (mm / sec)				
Load	2500	2000	1000	600	300					
Speed	6	12	18	24	36					

HTA28	Stroke ± 2 (mm)					Retracted Length ± 2 (mm)				
Stroke	50	100	150	200	250	300	350	400	450	
Retracted	175	225	275	325	375	440	490	540	590	

Stroke & Retracted length:

1. If stroke <300mm, Retracted length = stroke +125mm
Eg. Stroke 100mm, retracted length=225mm, extended length=325mm
2. If stroke >=300mm, Retracted length = stroke +140mm
Eg. Stroke 400mm, retracted length=540mm, extended length=940mm

HTA28



Voltage	12=12V DC	24=24V DC	36=36V DC	48=48V DC
Speed(mm/s)	Refer to page 4			
Stroke(mm)				
Retracted L(mm)	Refer to page 4			
Load(n)	Refer to page 4			
Front Attachment	1 = Normal, dia 6.5mm 3 = Normal, dia 10.5mm	2 = Normal, dia 8.5mm		
Refer to P6	4 = U shape, width 8mm, dia 6.5mm 6 = U shape, width 8mm, dia 10.5mm	5 = U shape, width 8mm, dia 8.5mm		
Rear Attachment	1 =0°, dia 8.5mm 3 =90°, dia 8.5mm	2 =0°, dia 10.5mm 4 =90°, dia 10.5mm		
Refer to P6				
Wire/Plug	1 = stripped wire	2 = 4 pin 90° curved plug		
Refer to P6	3 = 4 pin 0° straight plug	4 = 6 pin 0° straight plug		
Screw	P = Trapezoidal			
Signal Output	N = NO	H = HALL SENSOR		
Wire Length	1 = 600mm	2 = 1000mm	3 = 1500mm	4 = customized

Eg.

Voltage 12V DC, stroke 100MM, speed 6MM / S, load 2500N,

Code: HTA28-12-6-100-225 / 325-A-1-1-1-P-N-1

Statement

It is the user's responsibility to determine whether the licensed application is suitable for a particular product. However, as the research and development process continues to improve its product performance, GEMING can make modifications or changes without prior notice. Therefore, GEMING reserves the right to stop sales on the company's website, product catalog, terms of use or all other written information. All kinds of physical and chemical information can maintain the most accurate and true state.

HTA28 Reference Chart for Attachment

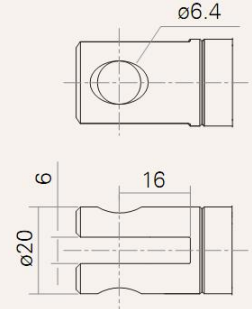
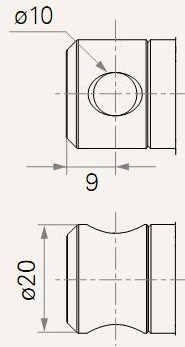
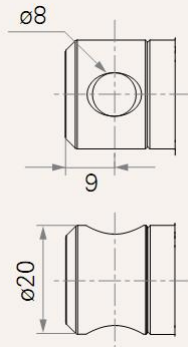
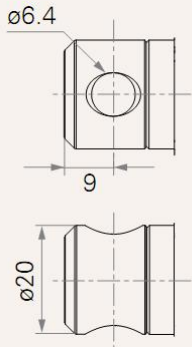
Front Attachment

1 = Normal, Aperture 6.5

2 = Normal, Aperture 8.5

3 = Normal, Aperture 10.5

4=U-type slot , width6.1,
Depth 16.0, aperture 6.5

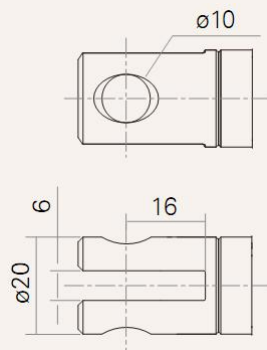
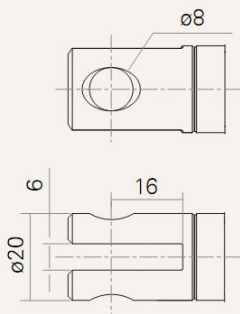


5=U-type slot, width6.1,
Depth 16.0, aperture 8.1

6=U-type slot,width 6.1,
Depth 16.0, aperture 10.1

7=

8=



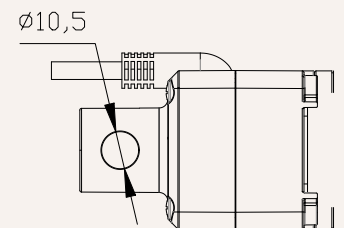
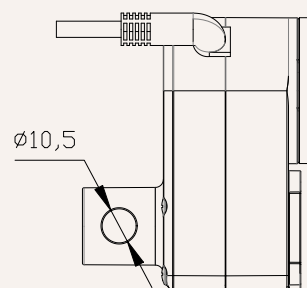
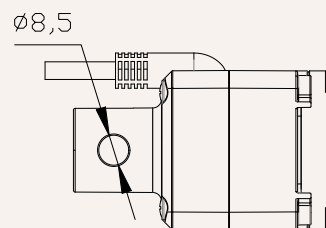
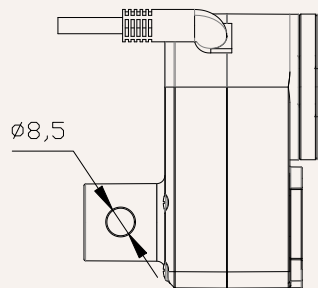
Rear Attachment

1=0 degree, Aperture 8.5mm

2=90degree, Aperture 8.5mm

2=0 degree, Aperture 10.5mm

2=90 degree, Aperture 10.5mm



Wire / Plug

1 = stripped wire

2 = 4 pin 90° curved plug

3 = 4 pin 0° straight plug

4 = 6 pin 0° straight plug

